



## Key Dates

- **INSET DAY**  
Thursday 2<sup>nd</sup> May
- **School Closed May day**  
Monday 6<sup>th</sup> May
- **Year 6 SATs Week**  
13<sup>th</sup> May - 17<sup>th</sup> May
- **Half Term Week**  
27<sup>th</sup> May - 31<sup>st</sup> May
- **School Opens for Summer 2**  
Monday 3<sup>rd</sup> June

### Welcome Back!

A very big welcome back to school after the Easter break. We hope you all had an enjoyable holiday and are ready to return for another fun filled term. The summer term is very busy with many exciting trips and events taking place across school.



### Tour De Yorkshire

On Friday 3<sup>rd</sup> May, the Tour De Yorkshire will be making its way through Airedale. The afternoon race will pass through at approximately 3:20pm. School will be open as normal on this day however, should you wish to take your child to join in with the afternoon activities within the community, you can collect your child from their normal entrance at 1:15pm. Please be aware school gates will be locked again at 1:45pm.



### Potential School Closure- European Elections

As the process of withdrawal from the European Union has not been finalised the Government now intends to hold a **European Parliamentary Election on Thursday 23 May 2019**. As our school is routinely used as a polling station we have been informed that if the election was to go ahead we will have no choice but to close so our facilities can once again be used. We understand the disruption and inconvenience this may cause however, it is compulsory that school is used for the poll. We aim to confirm this as soon as the Government notifies school. Thank you for your understanding.



### Club 100 Attendance Reward

This afternoon the children who achieved 100% attendance for the Spring Term and earned their bronze or silver Club 100 badge enjoyed the delights of our very own Oyster Park Ice Cream Parlour. The children had a choice of different ice cream flavours, sprinkles, sauces and wafers to make their own exciting and creative ice cream sundaes.



### INSET DAY - School Closed Reminder– Thursday 2<sup>nd</sup> May 2019 - Polling Station

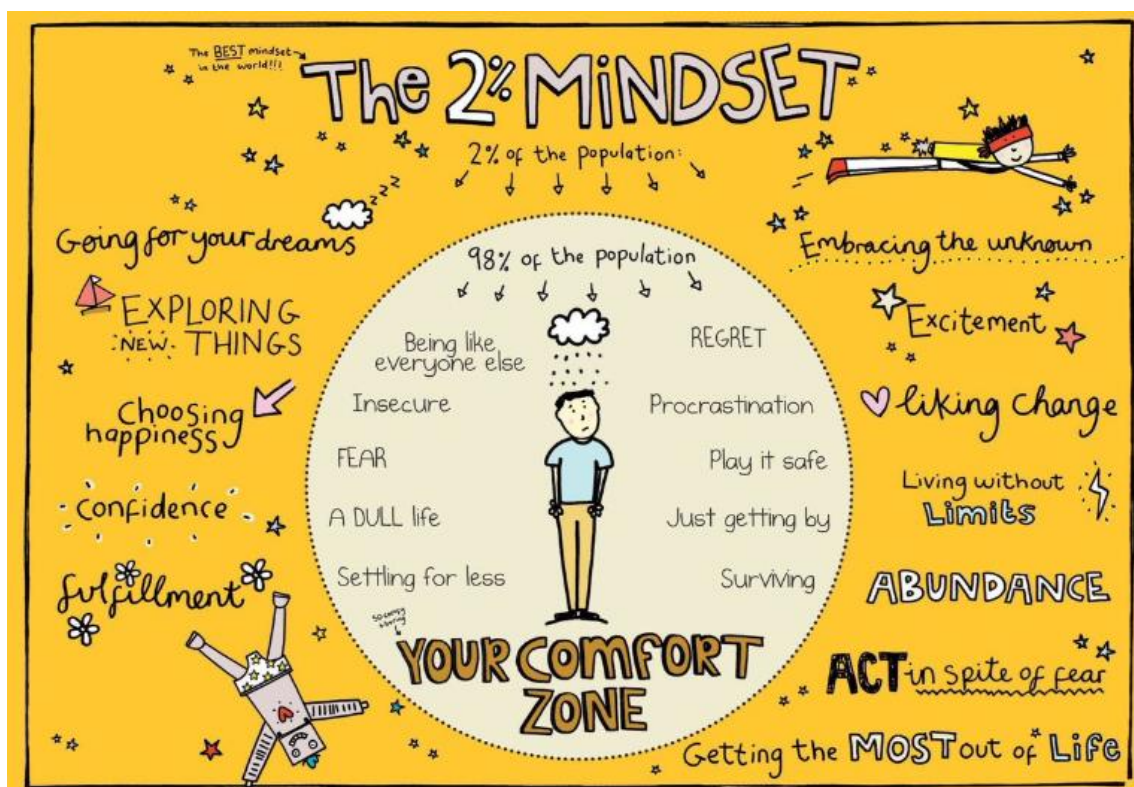
Just a reminder the school building will be closed on Thursday 2<sup>nd</sup> May 2019 to pupils from Nursery to Year 5 as our school is being used as a polling station for the local elections. Public access is required throughout the day and therefore in order to safeguard our children school will be closed. We apologise for the inconvenience this will cause.



Year 6 pupils are required to attend school as normal for registration and will be escorted by Year 6 staff to the High School where normal lessons will resume.

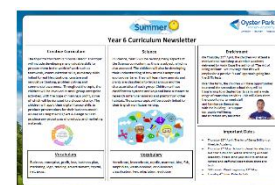
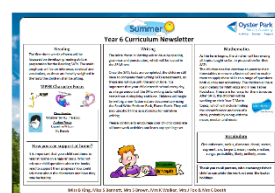
## Year 6 Andy Cope – ‘Being Brilliant’ Workshop

On Thursday, the children in Year 6 attended a workshop based on the principles of by best-selling author – Dr Andy Cope. Year Six collaborated with Airedale Junior School in a workshop centred around staying positive and focused during the SATs time period. The speaker gave the children interesting tasks, which challenged their viewpoints and ways of looking at their lives and futures as a whole. There were prizes to be won, including t-shirts and books on continuing to implement a positive mindset. All in all, Year Six came away from the session energised and ready to take on the world!



## Curriculum Newsletters

This week your child has brought home their year group Curriculum Newsletter for the term. Our Curriculum Newsletters detail to parents the teaching and learning elements planned for the term and advice on how you can support at home. Within school, we are having a huge drive on vocabulary, expanding our knowledge of language and the meanings of unfamiliar words. Featured on each newsletter is key vocabulary that will be explored in school. Please explore these words with your child at home. Copies of the Curriculum Newsletters can be found on our school website.



## Wanted!

To coincide with the Tour De Yorkshire we are wanting to create some impressive art work within our Foundation Stage area. If you have any old bike wheels with spokes that the children can use for weaving please bring them to the school office. All donations would be very much appreciated.

